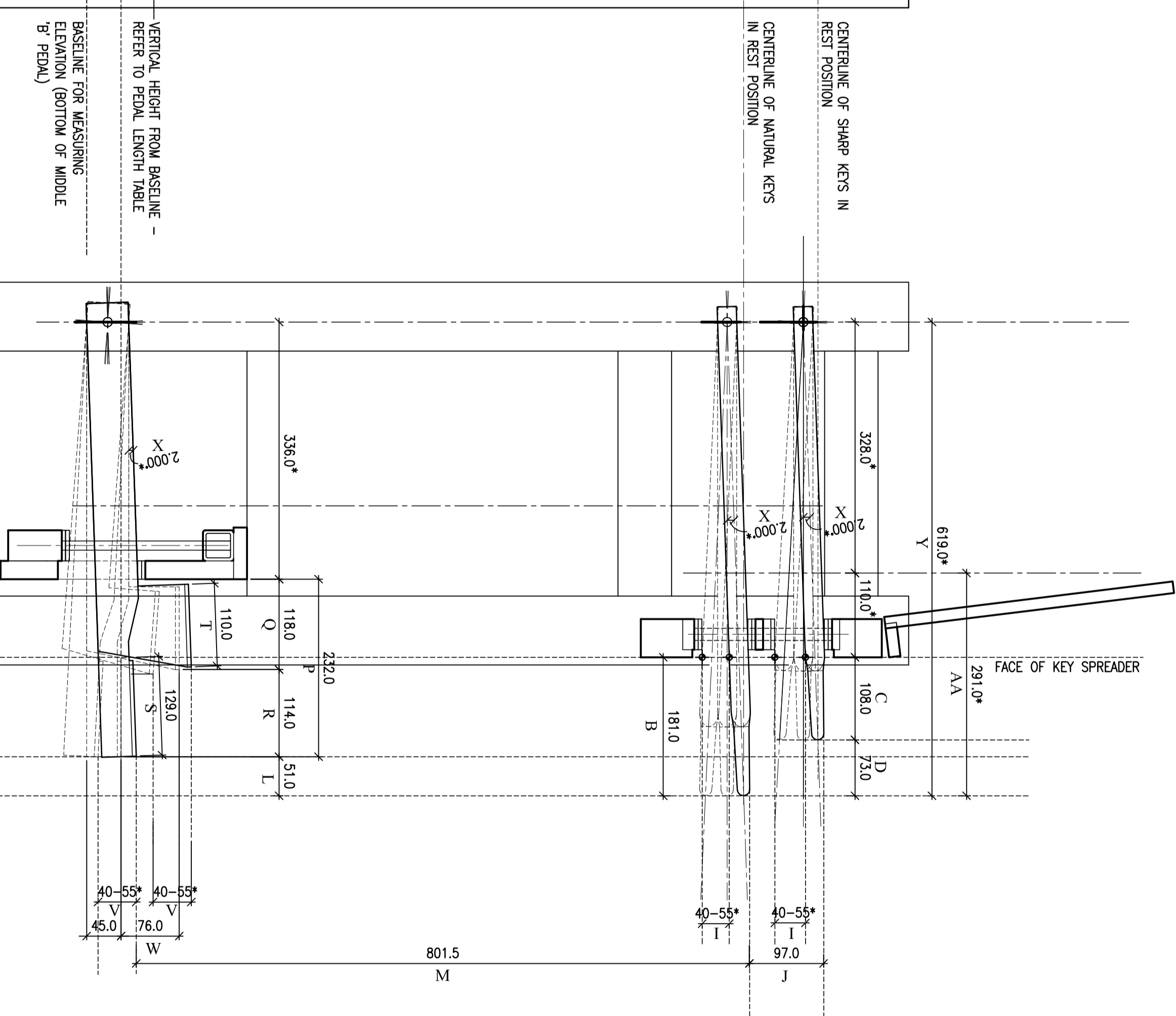
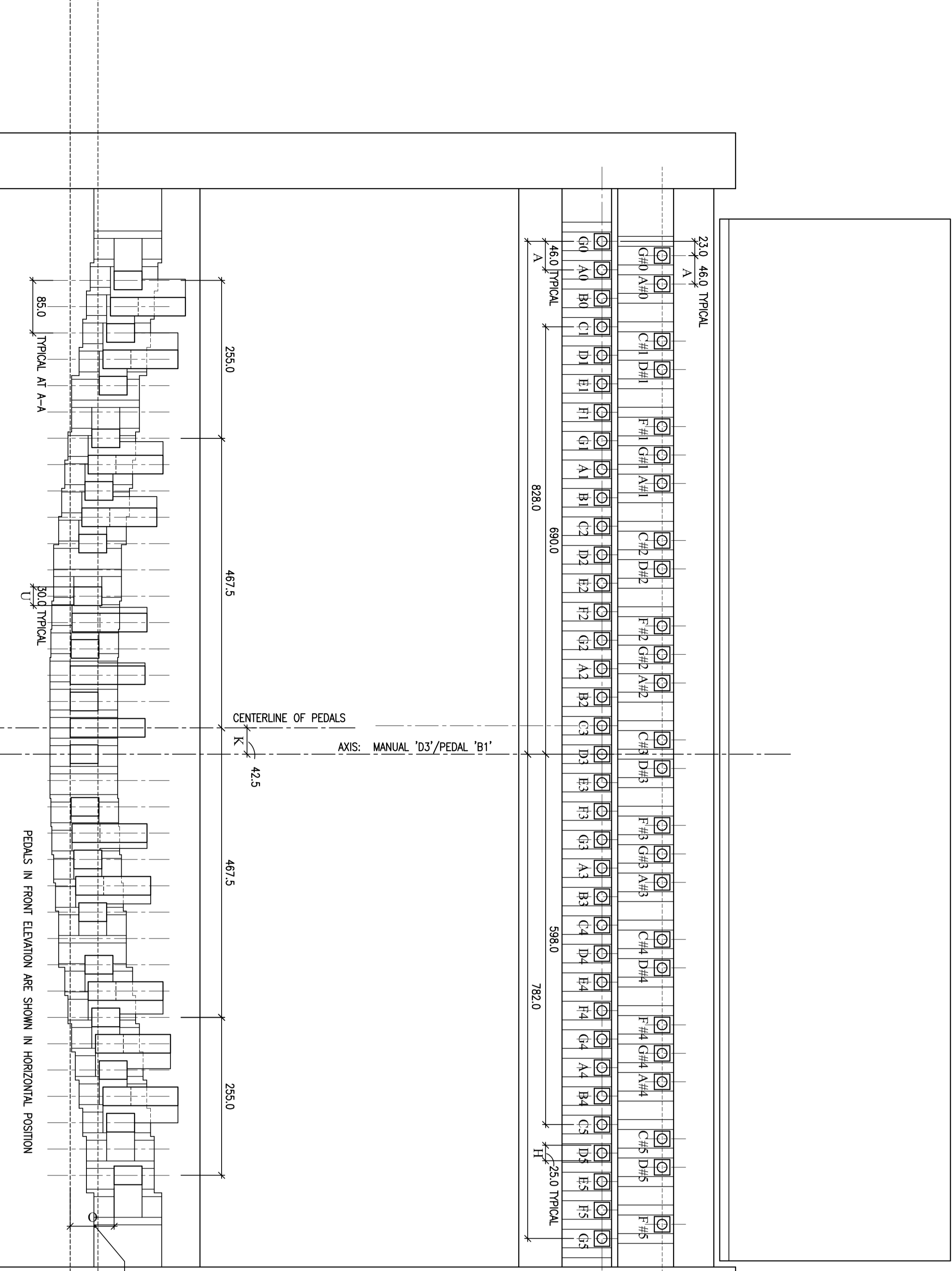
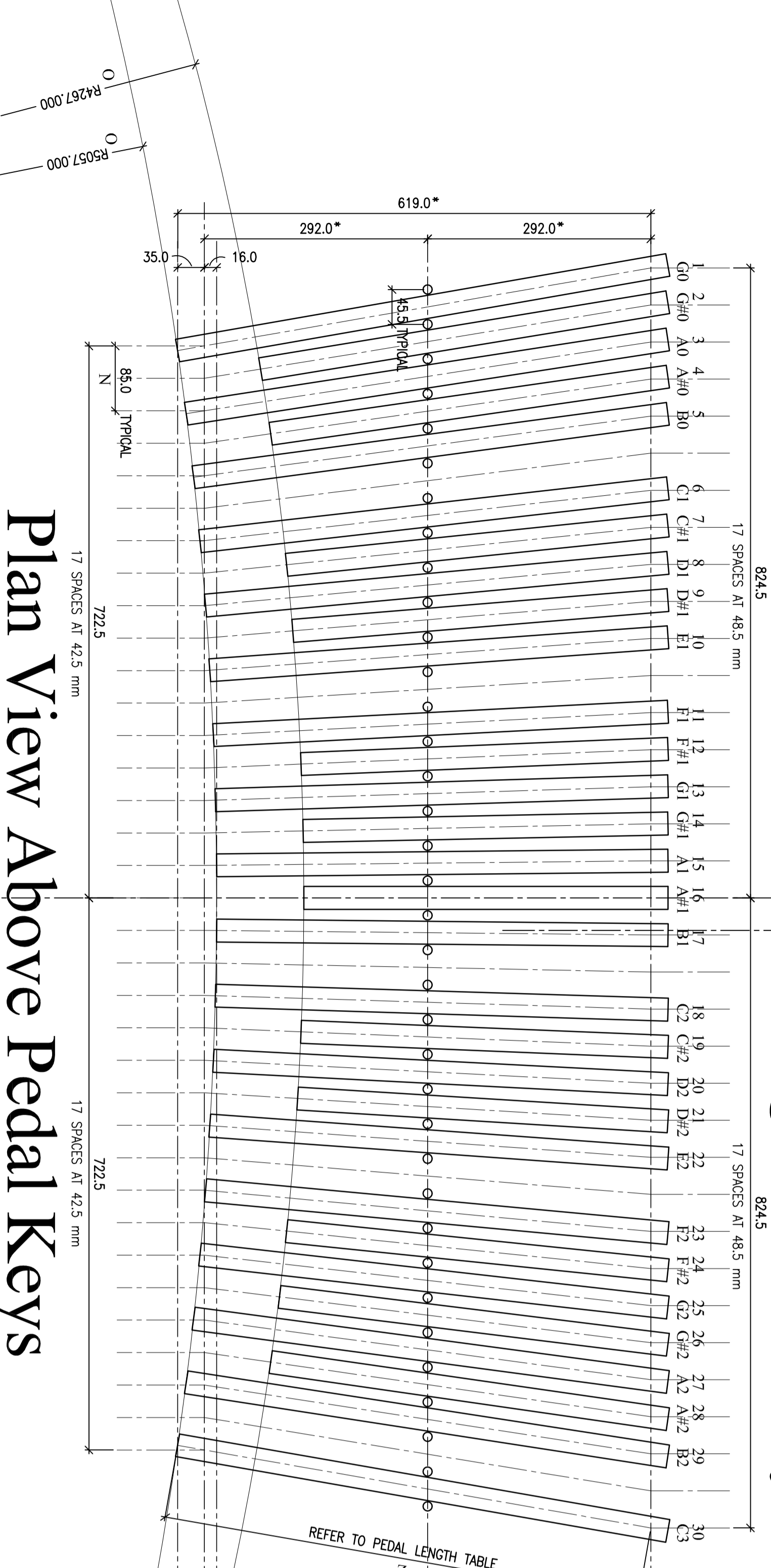


Typical Natural Manual Key



Front Elevation showing Ends of Keys

Cross Section

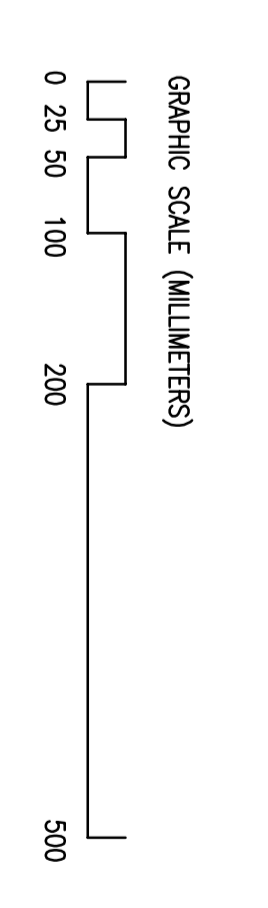


Pedal Length

NUMBER	NOTE	ELEVATION 'O'	DELTA ELEVATION	LENGTH 'Z'
1	G0	69.5	0	698.5
2	A0	69	0	577.5
3	A#0	59	0	619.0
4	B0	53	0	502.5
5	B#0	41	0	603.5
6	C1	35	0	593.5
7	C#1	29	0	479.0
8	D1	19	0	472.0
9	D#1	14	0	578.5
10	E1	9	0	571.0
11	F1	3	0	488.0
12	F#1	3	1.5	570.0
13	G1	0	0	485.0
14	G#1	0	0	485.0
15	A#1	0	0	449.0
16	A#1	0	0	449.0
17	B#1	0	0	568.0
18	C#2	1.5	0	570.0
19	C#2	1.5	0	488.0
20	D#2	6	0	573.0
21	E#2	9	0	463.0
22	F#2	19	0	578.5
23	F#2	19	0	598.0
24	G#2	24	0	479.0
25	A#2	29	0	488.0
26	A#2	29	0	488.0
27	B#2	35	0	603.5
28	B#2	35	0	603.5
29	C#3	53	0	628.5
30	C#3	53	0	628.5

Notes

- ALL DIMENSIONS ARE GIVEN IN MILLIMETERS.
- ASTERISK (*) INDICATES DIMENSION THAT MAY BE ADJUSTED TO THE NEEDS OF A PARTICULAR CARILLON.
- PURSUANT TO #2 ABOVE, ADJUSTMENT OF PEDAL LENGTH TABLE, SO THAT PLAYING ENDS OF PEDALS ARE MAINTAINED.



Plan View Above Pedal Keys

SCALE	1:5
DATE	11 MARCH 2005
DRAWN BY	PATRICK WACOSKA
REVISION	3 NOVEMBER 2006
REVISION	16 MAY 2006
REVISION	12 DECEMBER 2006
REVISION	19 DECEMBER 2006
REVISION	12 JUNE 2011
DRAWING NUMBER	1

A HYBRID STANDARD INCORPORATING FEATURES OF THE NORTH EUROPEAN AND NORTH AMERICAN STANDARDS AND BASED ON THE 'KEYBOARD 2000' DESIGN OF RICHARD STRAUSS, OAKLAND, CALIFORNIA, USA.